



PLEASE READ AND FOLLOW ALL WARNINGS



Universal Tool

UT2960

ADJUSTABLE CLUTCH SCREWDRIVER

Read Operating Instructions

Always become familiar with all the instructions and warnings before operating any power tool.

Always Wear Approved

Eye Protection

Impact resistant eye protection should meet or exceed the standards as set forth in the United States ANSI Z87.1, Occupational and Educational Eye and Face Protection. Look for the marking Z87.1 on your eye protection to insure that it is an approved style. For further information, ANSI Z87.1, Occupational and Educational Eye and Face Protection, is available from the American National Standards Institute, Inc., 11 West 42nd Street, New York, NY 10036.

Hearing Protection is Recommended

Hearing protection should be used when the noise level exposure equals or exceeds an 8 hour time-weighted average sound level of 85 dBA. Process noise, reflective surfaces, other tools being operated nearby, all add to the noise level present in your work area. If you are unable to determine your noise level exposure, we recommend the use of hearing protection.

Avoid Prolonged Exposure to Vibration

Tools can vibrate during use. Prolonged exposure to vibration or very repetitive hand and arm movements, can cause injury. Stop using any tool if discomfort, tingling feeling or pain occurs. You should consult your physician before resuming use of the tool.

90 PSIG Maximum

This tool is designed to operate at

an air pressure of 90 pounds per square inch gauge pressure (90 PSIG) maximum, at the tool. Use of higher air pressure can, and may cause injury. Also, the use of higher air pressure places the internal components under loads and stresses they were not designed for, causing premature failure. The air supply should be clean and dry, preferably lubricated. For best results, drain the moisture from your compressor daily.

WARNING:

Some dust created by power sanding, sawing, grinding, drilling, and other construction activities contains chemicals known to cause cancer, birth defects or reproductive harm. Some examples of these chemicals are:

- Lead from lead-based paints
- Crystalline silica from bricks, cement and other masonry products
- Arsenic and chromium from chemically treated lumber

Your risk from these exposures varies, depending on how often you do this type of work. To reduce your exposure to these chemicals, work in a well-ventilated area and work with approved safety equipment such as those dust masks that are specially designed to filter out microscopic particles.

Torque Adjustment

The tool is equipped with a 1/4" hex L shaped wrench and a 17mm X 12mm wrench. Remove clutch housing (ref. 41). Insert the 1/4" hex wrench in the tip of the cam spindle (ref. 32). Using the 17mm end of the wrench place on the adjust nut (ref. 39). and turn clockwise for more torque and counter clockwise for less torque. (Refer to Figure 1)

Description

Universal Tool pistol grip adjustable clutch screwdriver is equipped with a 1/4" hexagonal bit quick change holder. Fully reversible with the push of a button makes this a quick and easy tool to use which is ideal for sheet metal, wood and self-tapping screws.



Safety Instructions

The following instructions are furnished as general guidelines for use of your pneumatic tool. They cannot comprehensively cover all possible or conceivable uses of the subject tool. For additional information on the safe use of air tools, we advise you to obtain a copy of ANSI B186.1 Safety Code for Portable Air Tools, available from the following source:

American National Standards Institute, Inc.

11 West 42nd Street

New York, NY 10036.

The use of the word "shall" in the following instructions, indicates that adherence to the particular requirement is necessary to conform to ANSI B186.1.

Tool Application and Usage

Portable tools shall be used only for the purposes intended in their design and within the capacity for which they were intended and rated. It shall be the tool owner's and/or employer's responsibility to instruct each operator in the safe use of the tool. Tools shall not be used without guards and safety

devices as furnished by the manufacturer. Where an air tool is modified or altered, the modifier shall provide the safeguards to enable it to be safely used in the operations intended and to comply with any applicable provisions as contained in ANSI B186.1.

Tool Installation

Pressure regulators shall be used to limit air pressure to the rated pressure where the supply pressure exceeds the tool's rated pressure. Air hoses and lines shall be relieved of compressed air before being disconnected or disjointed, unless there is automatic valve closing protection at the joint being separated. Synthetic lubricants which can cause deterioration of elastomer seals shall not be used in air systems of air tools.

Tool Maintenance

It shall be the tool owner's and/or employer's responsibility to assure that tools are maintained in a safe operating condition. Tool maintenance and repair shall be performed by authorized, trained, competent personnel. Tools shall be disconnected from their compressed air supply before repairs are attempted. Repairs shall be consistent with the manufacturer's recommended procedures. Tool, hoses and fittings shall be replaced if unsuitable for safe operation. It shall be the tool owner's and/or employer's responsibility to keep required rating markings and warnings on the tool in legible condition.

Read these instructions carefully before attempting to install, operate or service this Florida Pneumatic product. Failure to comply with the instructions could result in personal injury and/or property damage! Retain these instructions for future reference.

FPMC

Universal Tool

A Division of Florida Pneumatic Manufacturing Corporation

851 Jupiter Park Lane, Jupiter, Florida 33458

Toll Free 1-800-327-9403





Universal Tool

UT2960
ADJUSTABLE CLUTCH SCREWDRIVER

Specifications

Clutch type	Internally adjustable
Free speed	800 RPM
Bit retainer	1/4" Hex Quick Change
Maximum torque	45-145 in./lbs.
Weight	2.7 lbs.
Overall length	8-1/2"
Average air consumption	4 CFM
Air inlet	1/4" NPT
Recommended hose size	3/8" I.D.
Maximum air pressure	90 PSI

*Q.C = Quick Change

Parts Breakdown for UT2960

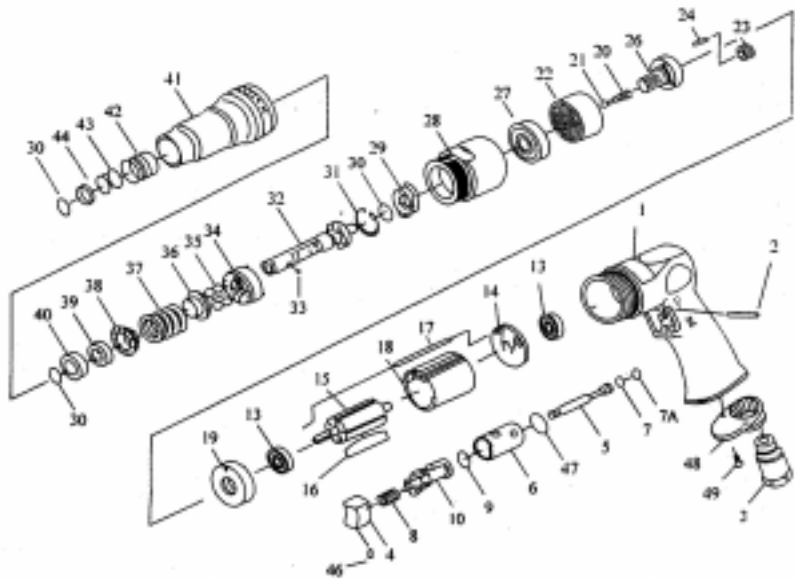
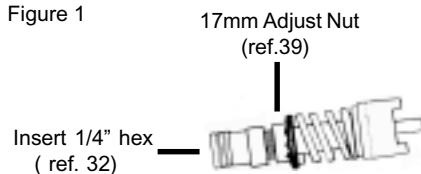


Figure 1



Universal Tool

UT2960
ADJUSTABLE CLUTCH SCREWDRIVER

Replacement Parts for UT2960

Ref.	Description	Part #	Ref.	Description	Part #
1	Housing	9404B01	27	Ball Bearing	9404B27
2	Pin	9404B02	28	Clamp Nut	9404B28
3	Air Inlet	9404B03	29	Drive Dog	9404B29
4	Trigger	9404B04	30	Retaining Ring (3)	9404B30
5	Valve Stem	9404B05	31	Retaining Ring	9404B31
6	Reverse Bushing	9404B06	32	Cam Spindle	9404B32
7	O-Ring	9404B07	33	Steel Ball	9404B33
8	Valve Spring	9404B08	34	Clutch Carrier	9404B34
9	O-Ring	9404B09	35	Steel Ball (4)	9404B35
10	Reverse Lever	9404B10	36	Washer	9404B36
13	Ball Bearing (2)	9404B13	37	Spring	9404B37
14	End Plate (2)	9404B14	38	Washer	9404B38
15	Rotor	9404B15	39	Adjust Nut	9404B39
16	Rotor Blade (5)	9404B16	40	Spacer	9404B40
17	Pin	9404B17	41	Clutch Housing	9404B41
18	Cylinder	9404B18	42	Ball Retainer	9404B42
19	Spacer	9404B19	43	Spring	9404B43
20	Spring	9404B20	44	Washer	9404B44
21	Spring Guide	9404B21	46	Set Screw	9404B46
22	Internal Gear	9404B22	47	O-Ring	9404B47
23	Planet Gear (3)	9404B23	48	Exhaust Diffuser	9404B48
24	Pin (3)	9404B24	49	Screw (2)	9404B49
26	Work Spindle	9404B26	50	Reduction Spindle	9404B50
			51	Center Gear	9404B51

Limited Warranty

Universal Tool warrants its tools to be free from defects in material and workmanship for one year from the date of purchase. This warranty does not apply to tools which have been abused, misused, modified or repaired by someone other than Universal Tool or its authorized service centers. If a Universal Tool proves defective in material of workmanship within one year after purchase, return it to any authorized service center or to Universal Tool, freight prepaid. Please enclose your name, address and adequate proof of purchase date with a brief description of the defect. Universal Tool will, at its option, repair or replace defective tools, free of charge. Repairs or replacements are warranted as described above for the remainder of the warranty period. Universal Tool's sole liability and your exclusive remedy under this warranty is limited to repair or replacement of the defective tool. There are no other warranties expressed or implied and Universal Tool shall not be liable for incidental, consequential or special damages, or any other damages, costs or expense of repair or replacement as described above.