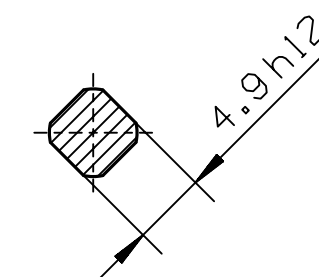
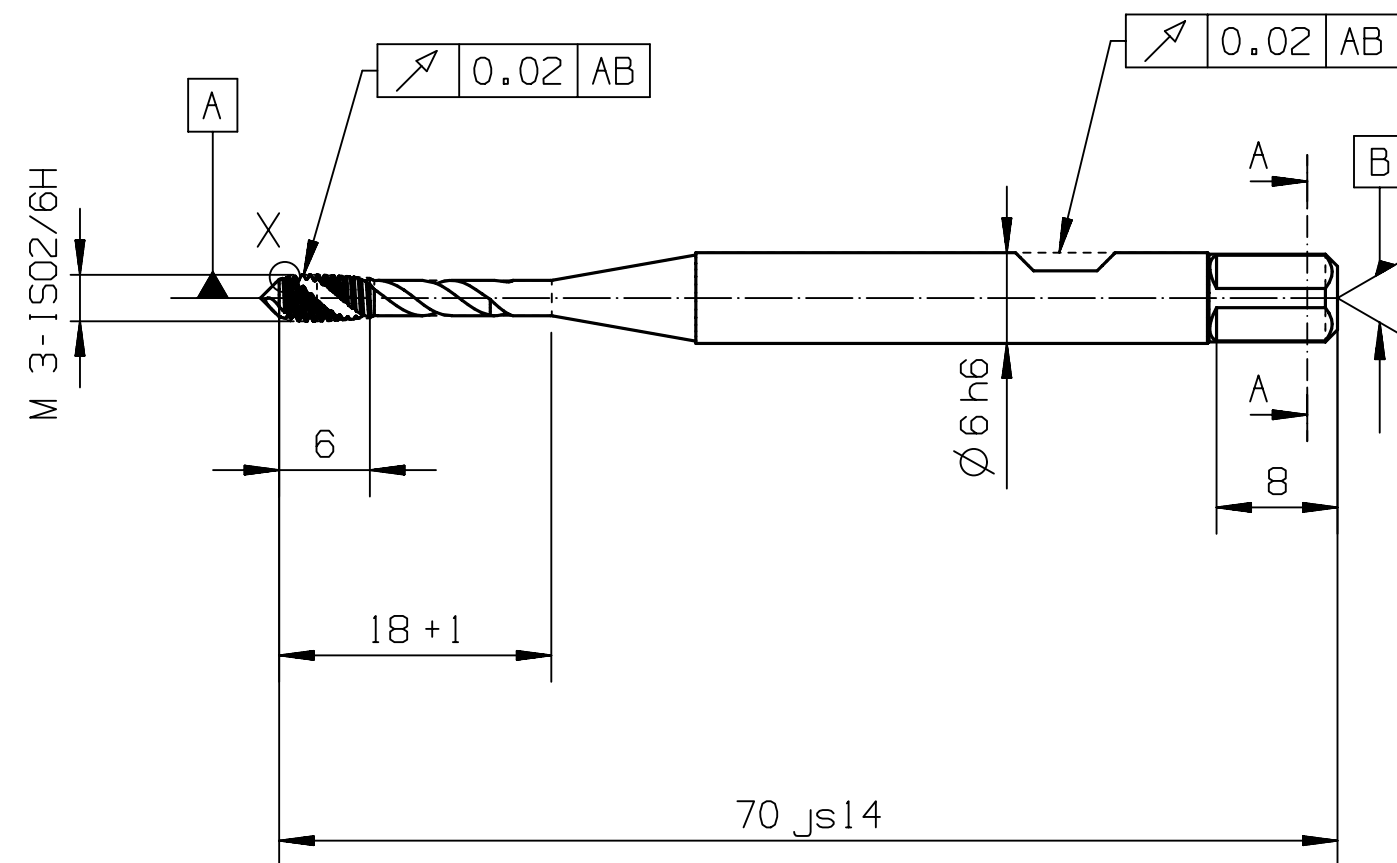


X 20:1



A - A

Characteristics Tap:	
Flutes	2
Thread direction	right
Spiral angle	45
Type of lead	C
Standard	DIN 371

Qty.	Description				Det.	Dwg. No.	Material			
Proprietary Information DIN ISO 16016:2002-5							Scale: 2:1		Format: A3	
We reserve all Rights to this drawing including for the purpose of issuing patents and registration of petty patents. Without our written consent this drawing may not be copied, whole or partially, and may not be misused by the recipient as well as third parties. Any infraction will result in compensation for occurred damages and could lead to legal action by the author.							Material: HSS-E			
							Surface:			
					Date	Name		Description: PARADUR WLM Synchrospeed		
				Drawn	09.08.17	PROTOTYP				
				Checked				Drawing-No.: S2051-5075364		
										D10
Rev.	Revision	Date	Name	Cust. No.:			Ord.-Code: S20516-M3			